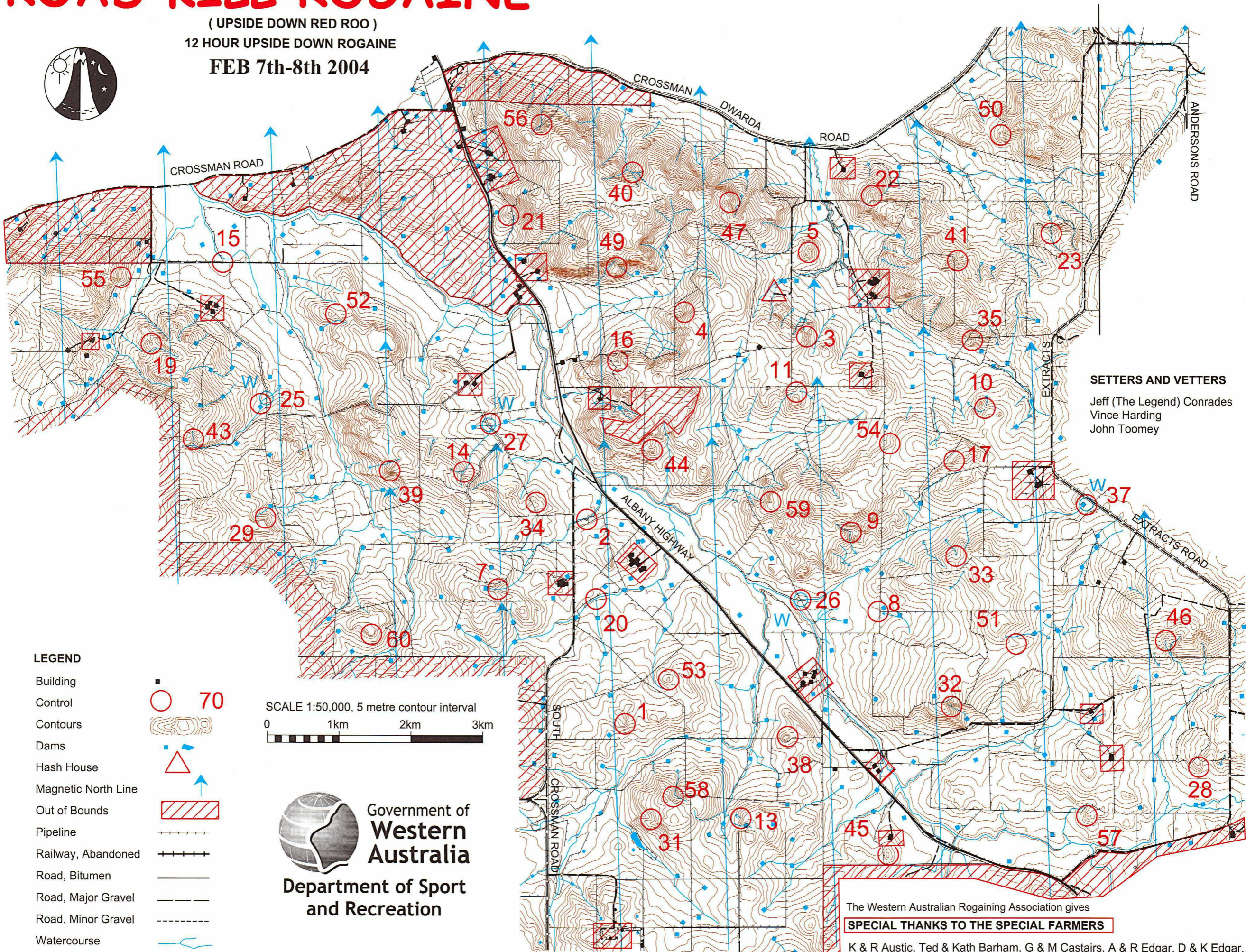


ROAD KILL ROGAINE

(UPSIDE DOWN RED ROO)
 12 HOUR UPSIDE DOWN ROGAINE
 FEB 7th-8th 2004



SETTERS AND VETTERS
 Jeff (The Legend) Conrades
 Vince Harding
 John Toomey

- LEGEND**
- Building
 - Control
 - Contours
 - Dams
 - Hash House
 - Magnetic North Line
 - Out of Bounds
 - Pipeline
 - Railway, Abandoned
 - Road, Bitumen
 - Road, Major Gravel
 - Road, Minor Gravel
 - Watercourse
 - Water Drop

SCALE 1:50,000, 5 metre contour interval
 0 1km 2km 3km



The Western Australian Rogaining Association gives
SPECIAL THANKS TO THE SPECIAL FARMERS
 K & R Austic, Ted & Kath Barham, G & M Castairs, A & R Edgar, D & K Edgar,
 Mike, Kaye & Simon Ferrari, A & C-A Hardie, B Hardie (Hash Site)
 Jamie Fowler, (Aubrey Fowler & Co), A & S Fenwick,
 G & D Lyster, G, P, & R Reid, M & J Wilkie, I Brackenridge.

This map was produced using OCAD 8 (under sufferance). Data supplied by DOLA and used under copy licence 393/93. Thanks to David Chiang of DOLA.
 Possession of this map does not give right of entry to this area.

Road Kill - Upsidedown Rogaine Feb 7th & 8th 2004

| No. | Description | Points | No. | Description | Points | Important Information | |
|-----|------------------------------------------|--------|-----|-----------------------------------|--------|-----------------------------------------------------------------------|------------------------------------|
| 1 | The Spur | 10 | 37 | The Dam - East Side (Water) | 70 | Control Cards From 7:30pm Saturday | |
| 2 | The Middle Watercourse Bend - South Side | 10 | 38 | The Knoll - East Side | 70 | | |
| 3 | The Middle Gully | 10 | 39 | The Spur | 70 | | |
| 4 | The Gully | 10 | 40 | The Middle Watercourse Junction | 70 | | |
| 5 | The Saddle | 10 | 41 | The Middle Spur | 70 | | |
| 6 | | | 42 | | | | |
| 7 | The Watercourse | 20 | 43 | The Watercourse | 80 | | Briefing 7:50pm Saturday |
| 8 | A Bluegum Plantation - N/E Edge | 20 | 44 | A Knoll | 80 | | Start 8:00pm Saturday |
| 9 | The Watercourse Bend | 20 | 45 | The Knoll | 80 | | |
| 10 | The Saddle | 20 | 46 | The Watercourse - Head of | 80 | | Finish 8:00am Sunday |
| 11 | The Saddle | 20 | 47 | The Gully | 80 | | |
| 12 | | | 48 | | | | |
| 13 | The Watercourse - Head of | 30 | 49 | A Saddle | 90 | Hash House Opens by 06:00am Sun Closes about 09:30am Sun | |
| 14 | The Watercourse Junction | 30 | 50 | The Spur | 90 | | |
| 15 | The Track/Fence Junction | 30 | 51 | The Spur | 90 | | |
| 16 | The Gully | 30 | 52 | The Saddle | 90 | | |
| 17 | The Spur - Top of Breakaway | 30 | 53 | The Knoll - South Side | 90 | Sunset 1913hrs Saturday | |
| 18 | | | 54 | The Gully | 90 | | |
| 19 | The Knoll | 40 | 55 | The Spur | 100 | Sunrise 0543hrs Sunday | |
| 20 | The Watercourse Junction | 40 | 56 | The Watercourse Bend | 100 | | |
| 21 | The Knoll | 40 | 57 | A Gully - Head of | 100 | Moonrise 2009hrs Saturday | |
| 22 | The Knoll | 40 | 58 | A Gully Junction | 100 | | |
| 23 | The Watercourse | 40 | 59 | The Gully | 100 | Moonset 0714hrs Sunday | |
| 24 | | | 60 | A Breakaway - Top of | 100 | | |
| 25 | The Dam - North side (Water) | 50 | | | | | |
| 26 | A Track/Creek Junction (Water) | 50 | | | | | |
| 27 | The Knoll (Water) | 50 | | | | | |
| 28 | The Spur | 50 | | | | Late Penalty 10 points per minute or part minute | |
| 29 | The Spur | 50 | | | | | |
| 30 | | | | | | | |
| | | | | Water Drops:- | | | |
| 31 | The Gully | 60 | 25 | On the track east side of the Dam | | | |
| 32 | The Watercourse Junction | 60 | 26 | A Track/Creek Junction (Water) | | | |
| 33 | The Watercourse - Head of | 60 | 27 | On the track west of the Knoll | | | |
| 34 | The Gully - Head of | 60 | 37 | On the fence line east of the Dam | | | |
| 35 | The Eastern Gully | 60 | | | | Controls Used 52 | |
| 36 | | | | | | | |
| | | | | | | Total Points 2940 | |
| | | 1050 | | | 1890 | | |